

LAWN-BOY®

GoldPro Series™ Walk-Behind Mower Model No. 10525-990001 and Up

Parts Catalog

Ordering Replacement Parts

To order replacement parts, please supply: the part number, the quantity, and the description of each part desired.

Understanding Reference Numbers

Each identified part in an illustration has a reference number. The reference number for a part also appears in the parts list, along with other information about the part.

This catalog uses two special reference number formats, one to indicate parts in a service assembly and another to indicate the quantity of a given part in an illustration.

Service Assembly Reference Numbers

Parts in service assemblies have reference numbers in the form **a:b**. The **a** represents the reference number of the entire service assembly and the **b** represents a sequential number unique to each part within the service assembly.

For example, a wheel assembly might be identified by reference number **6**, the tire by **6:1**, the valve by **6:2**, and the wheel by **6:3**. When you order the assembly identified by reference number **6**, you receive all parts identified by reference numbers **6:1**, **6:2**, and **6:3**. However, you may also order any part individually.

Reference numbers of this type appear in illustrations and in part lists.

Reference Numbers Indicating Quantity

In an illustration, if a reference number indicates more than one part, the reference number has the form **nX y**. The **n** represents the quantity of the part, the **X** is the multiplication symbol, and the **y** represents the reference number.

For example, in an illustration, the reference number **2X 37** means that two of the parts identified by reference number **37** are indicated.

Contents

| Description | Page | Description | Page |
|------------------------------------|------|--|------|
| Housing Assembly | 3 | Gear Case Assembly No. 92-7869 | 7 |
| Engine & Blade Assembly | 4 | Engine Assembly No. 98-1396 | 8 |
| Rear Axle Assembly | 5 | Short Block Assembly No. 95-7636 | 10 |
| Handle And Controls Assembly | 6 | Carburetor Assembly No. 98-7042 | 11 |

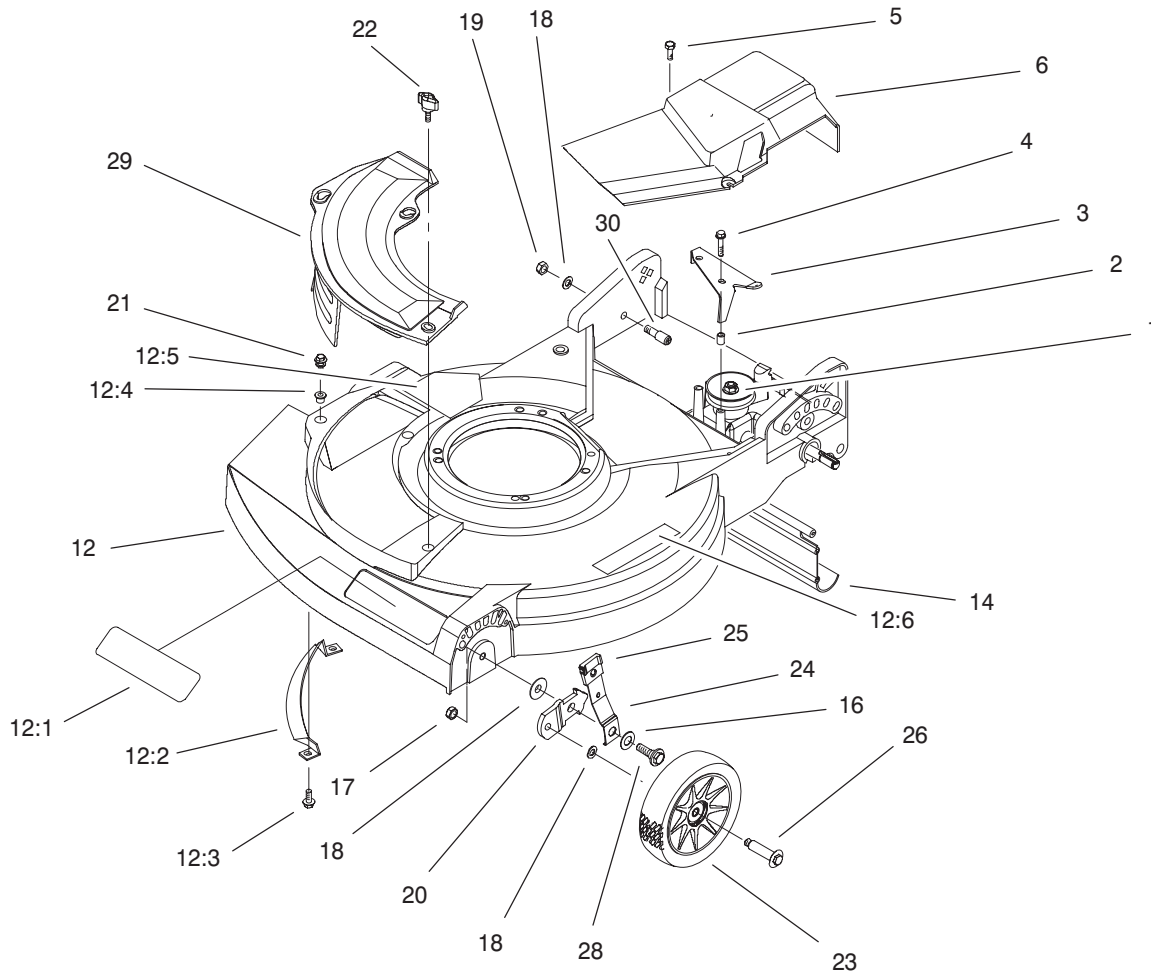
Accessories

| Description | Model / Part No. | Description | Model / Part No. |
|------------------------|------------------|-------------------------|------------------|
| Side Bagging Kit | Model No. 89817 | Leaf Bag | Model No. 89804 |
| Rear Bagging Kit | Model No. 89800 | Leaf Shredder Kit | Model No. 89860 |

Part Description Abbreviations

Part descriptions in this catalog may include the following abbreviations.

| Abbreviation | Meaning | Abbreviation | Meaning |
|--------------|-----------------------------------|--------------|-------------------------|
| AR | as required | INC | incorporated |
| ASM | assembly | LH | left hand |
| CARR | carriage | NI | nylon insert |
| DEG | degrees | PPH | Phillips pan head |
| FH | flat head | PTH | Phillips truss head |
| GA | gauge | PTO | power take off |
| HF | hex flange | RH | right hand |
| HH | hex head | SFH | slotted fillister head |
| HHF | hex head flange | SHH | slotted hex head |
| HLH | hex lag head | SQH | square head |
| HJ | hex jam | SHWH | slotted hex washer head |
| HOC | height-of-cut | SPH | slotted pan head |
| HS | hex socket | SRH | slotted round head |
| HSBH | hex socket button head | STD | standard |
| HSFH | hex socket flat head | TAP | self tapping |
| HSH | hex socket head | TTH | Torx truss head |
| HWH | hex washer head | WH | wing head |
| HWHTF | hex washer head thread forming | | |

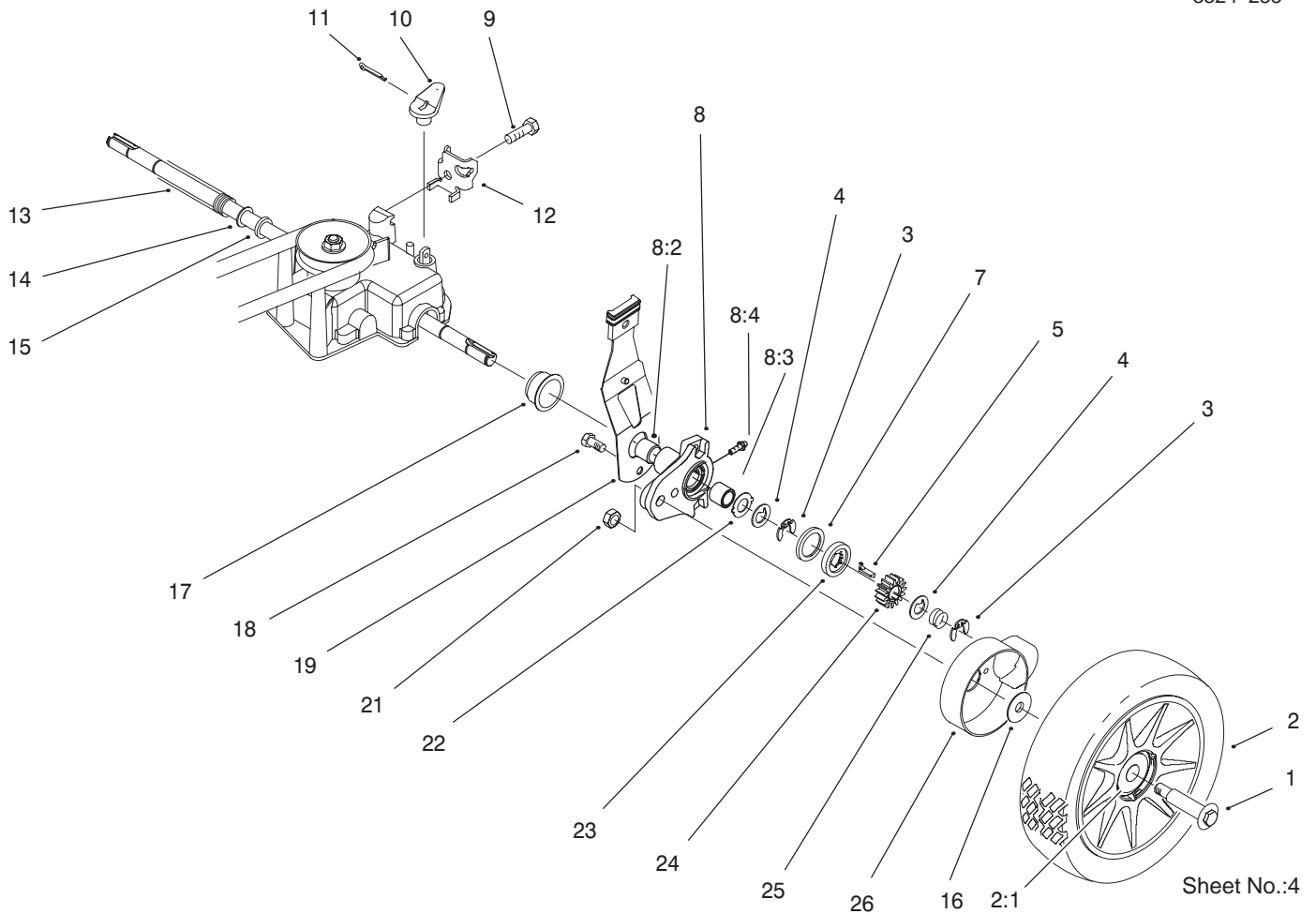


Sheet No.:2

Housing Assembly

| Ref. No. | Part No. | Qty. | Description | Ref. No. | Part No. | Qty. | Description |
|----------|------------|------|---------------------------------|----------|----------|------|---------------|
| 1 | 92-7869 | 1 | Gear Case ASM | 26 | 92-1099 | 2 | Bolt-Shoulder |
| 2 | 46-5551 | 2 | Spacer | 28 | 92-4856 | 2 | Bolt-Shoulder |
| 3 | 92-7699-03 | 1 | Bracket-Actuator | 29 | 92-8630 | 1 | Plate-Mulch |
| 4 | 92-7748 | 2 | Screw-HWH | 30 | 92-9673 | 2 | Screw-Torx |
| 5 | 12-5450 | 2 | Screw | *99 | 95-7052 | 1 | Plate-Cover |
| 6 | 98-4493 | 1 | Cover-Drive | *99 | 614249 | 1 | Tie Strap |
| 12 | 99-1566 | 1 | Housing | | | | |
| 12:1 | 95-7421 | 1 | Decal-Deck | | | | |
| 12:2 | 608175 | 1 | Toe Bar | | | | |
| 12:3 | 46-6811 | 2 | Screw-HWH | | | | |
| 12:4 | 94-1610 | 3 | Grommet-Plastic | | | | |
| 12:5 | 43-8480 | 1 | Decal-Danger | | | | |
| 12:6 | 93-7250 | 1 | Decal-Warning | | | | |
| 14 | 92-7736 | 1 | Shield-Trailing | | | | |
| 16 | 3290-413 | 2 | Washer-Spring | | | | |
| 17 | 3296-39 | 2 | Nut-Lock | | | | |
| 18 | 40-1940 | 6 | Washer | | | | |
| 19 | 610358 | 2 | Nut-Lock | | | | |
| 20 | 95-7403-03 | 2 | Bracket-Wheel Height Adjustment | | | | |
| 21 | 614677 | 2 | Screw-Sems | | | | |
| 22 | 98-8332 | 1 | Knob | | | | |
| 23 | 684776 | 2 | Wheel & Tire ASM | | | | |
| 24 | 92-1006 | 2 | Spring Arm ASM-Front | | | | |
| 25 | 92-1008 | 4 | Knob-Lever,Height Adjustment | | | | |

* Not illustrated

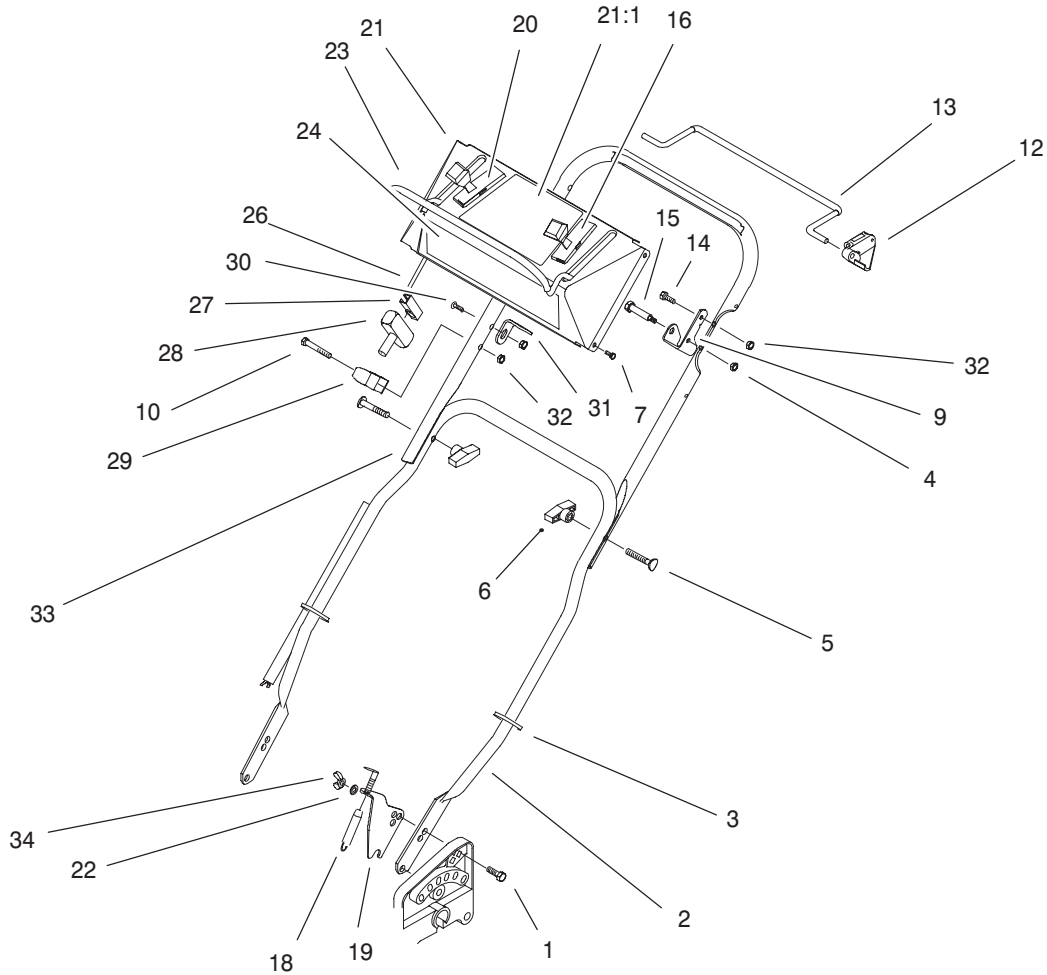


Rear Axle Assembly

| Ref. No. | Part No. | Qty. | Description |
|----------|----------|------|--------------------------------|
| 1 | 92-1057 | 2 | Bolt-Shoulder |
| 2 | 92-1042 | 2 | Wheel & Tire ASM |
| 2:1 | 27-6250 | 2 | Bushing |
| 3 | 65-2720 | 4 | Ring-Retaining |
| 4 | 65-4740 | 4 | Washer-Thrust |
| 5 | 66-6050 | 1 | Key-Rocking LH |
| *6 | 66-6040 | 1 | Key-Locking RH |
| 7 | 65-4710 | 2 | Ring-Friction |
| 8 | 92-7746 | 2 | Arm ASM-Rear Height Adjustment |
| 8:2 | 70-9760 | 2 | Bushing |
| 8:3 | 47-2900 | 2 | Bushing |
| 8:4 | 302-56 | 2 | Fitting-Grease |
| 9 | 32144-70 | 1 | Screw-HH |
| 10 | 60-8821 | 1 | Lever-Shift |
| 11 | 3272-10 | 1 | Pin-Cotter |
| 12 | 82-8780 | 1 | Retainer-Cable |
| 13 | 24-7920 | 1 | Cover-Drive Shaft |
| 14 | 303259 | 1 | Washer |
| 15 | 605255 | 1 | Washer-Flat |
| 16 | 614426 | 2 | Washer-Stepped |
| 17 | 92-6535 | 2 | Cap-End |
| 18 | 32144-85 | 2 | Screw-HH |
| 19 | 92-6540 | 1 | Rear Spring Arm ASM-LH |
| *20 | 92-6539 | 1 | Rear Spring Arm |

| Ref. No. | Part No. | Qty. | Description |
|----------|----------|------|--------------------|
| | | | ASM-RH |
| 21 | 610358 | 2 | Nut-Lock |
| 22 | 65-4730 | 2 | Washer-Arm, Pivot |
| 23 | 65-4760 | 2 | Washer |
| 24 | 65-4750 | 2 | Gear-Pinion |
| 25 | 65-4720 | 2 | Spring-Compression |
| 26 | 94-1609 | 2 | Cover-Wheel |

* Not illustrated

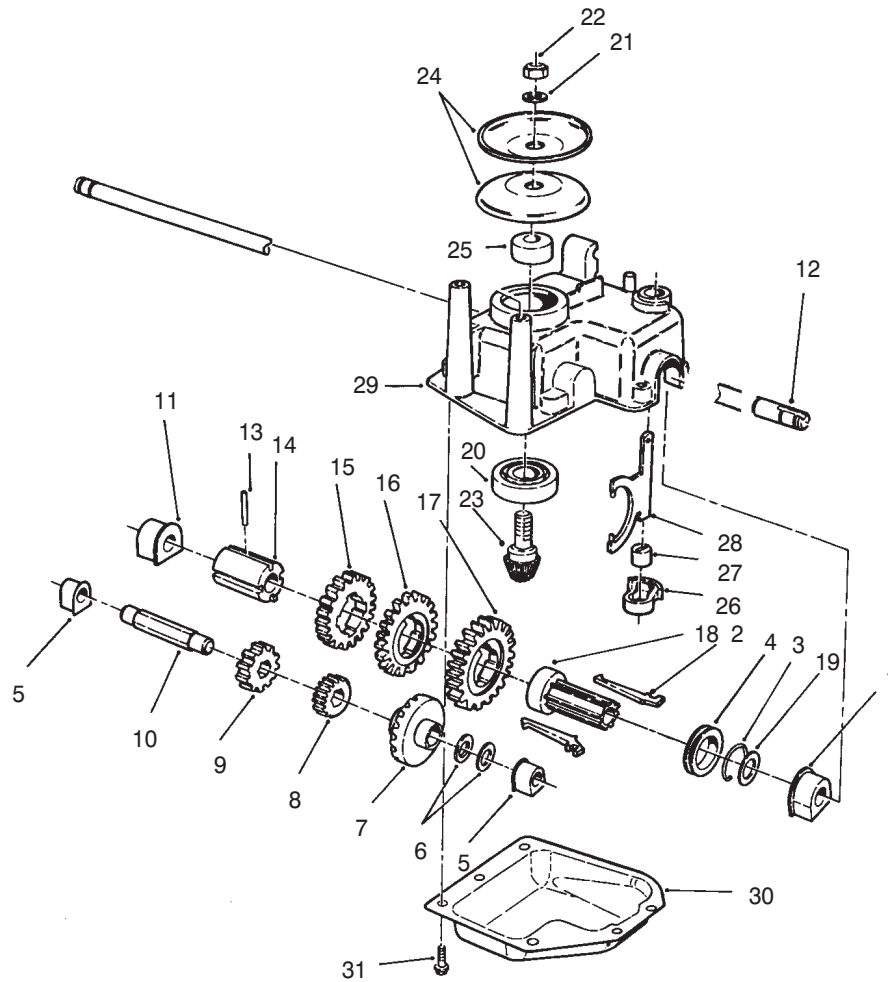


Sheet No.:5

Handle And Controls Assembly

| Ref. No. | Part No. | Qty. | Description |
|----------|------------|------|---------------------------|
| 1 | 3230-29 | 2 | Bolt-CARR |
| 2 | 92-6537-05 | 1 | Handle-Lower |
| 3 | 614249 | 2 | Tie Strap |
| 4 | 3296-56 | 1 | Nut-Lock |
| 5 | 614697 | 2 | Screw-Handle |
| 6 | 98-7134 | 2 | Knob |
| 7 | 92-9665 | 4 | Screw |
| 9 | 92-1094 | 1 | Bracket-Stop, Bail |
| 10 | 321-51 | 1 | Bolt-HH |
| 12 | 92-5412 | 1 | Stop-Pivot |
| 13 | 92-1001-03 | 1 | Bail-Control |
| 14 | 321-4 | 1 | Screw-HH |
| 15 | 613050 | 1 | Bolt |
| 16 | 95-7410 | 1 | Control ASM-Throttle |
| 18 | 92-6518 | 1 | Cable-Traction |
| 19 | 92-7899-03 | 1 | Bracket-Traction Cable |
| 20 | 92-8926 | 1 | Cable-Ground Speed |
| 21 | 99-1563 | 1 | Control Panel ASM |
| 21:1 | 98-4469 | 1 | Decal-Control Panel |
| 22 | 3253-33 | 2 | Washer-Lock |
| 23 | 92-1093 | 1 | Bail-Engine Control |
| 24 | 98-1565 | 1 | Decal-Panel |
| 26 | 95-7411 | 1 | Brake Cable ASM |
| 27 | 612824 | 1 | Starter-Clip |
| 28 | 612825 | 1 | Handle-Start |

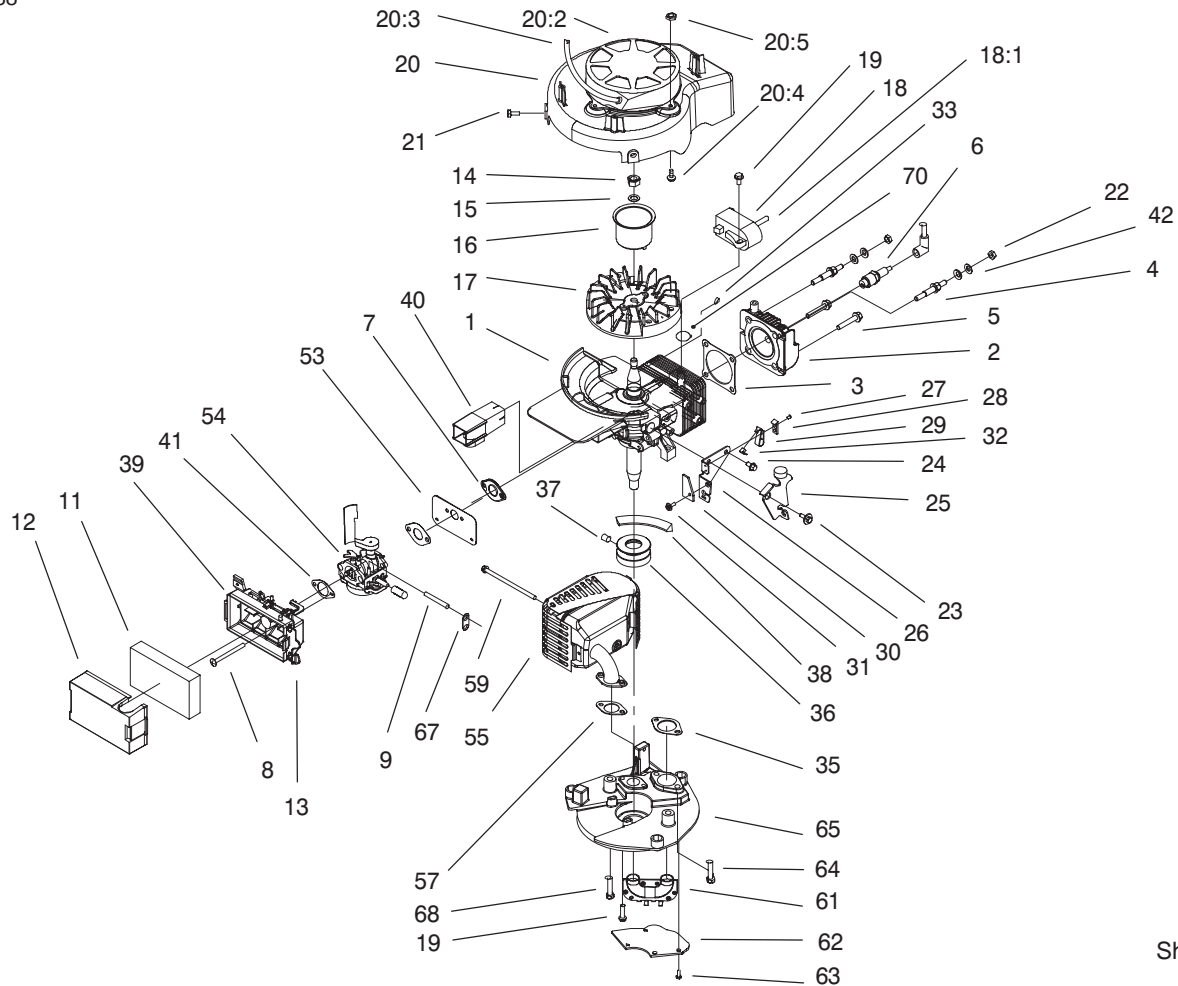
| Ref. No. | Part No. | Qty. | Description |
|----------|------------|------|-----------------------|
| 29 | 93-7383 | 1 | Guide-Rope |
| 30 | 92-2268 | 1 | Screw-Handle |
| 31 | 92-2928 | 1 | Bracket-Anchor, Cable |
| 32 | 3296-73 | 3 | Nut-Lock |
| 33 | 92-1092-05 | 1 | Handle-Upper |
| 34 | 32103-29 | 2 | Nut-Wing |



Sheet No.:300

Gear Case Assembly No. 92-7869

| Ref. No. | Part No. | Qty. | Description | Ref. No. | Part No. | Qty. | Description |
|----------|----------|------|----------------------|----------|----------|------|----------------|
| 1 | 60-8770 | 1 | Bushing-Output Shaft | 27 | 29-9570 | 1 | Bushing-Yoke |
| 2 | 76-0760 | 2 | Key-Shift | 28 | 60-8870 | 1 | Yoke-Shift |
| 3 | 65-5250 | 1 | Clip-Spring | 29 | 60-8710 | 1 | Gearcase-Upper |
| 4 | 76-0770 | 1 | Collar-Shift | 30 | 60-8730 | 1 | Cover-Gearcase |
| 5 | 60-8750 | 2 | Bushing | 31 | 49-2040 | 6 | Screw-HH |
| 6 | 36-4791 | 2 | Washer-Thrust | | | | |
| 7 | 55-3760 | 1 | Pinion-15T | | | | |
| 8 | 55-3780 | 1 | Pinion-20T | | | | |
| 9 | 55-3800 | 1 | Pinion-25T | | | | |
| 10 | 60-8800 | 1 | Shaft-Intermediate | | | | |
| 11 | 60-8850 | 1 | Bushing-Output | | | | |
| 12 | 65-4770 | 1 | Shaft-Output | | | | |
| 13 | 3285-19 | 1 | Pin-Spirol | | | | |
| 14 | 60-8790 | 1 | Sleeve-Gear | | | | |
| 15 | 55-3810 | 1 | Gear-39T | | | | |
| 16 | 55-3790 | 1 | Gear-44T | | | | |
| 17 | 55-3770 | 1 | Gear-49T | | | | |
| 18 | 76-0780 | 1 | Sleeve-Shift Key | | | | |
| 19 | 36-4780 | 1 | Washer-Thrust | | | | |
| 20 | 38-7820 | 1 | Bearing-Ball | | | | |
| 21 | 3256-24 | 1 | Washer-Flat | | | | |
| 22 | 3296-5 | 1 | Nut-Lock | | | | |
| 23 | 95-1731 | 1 | Pinion-Bevel | | | | |
| 24 | 60-8840 | 2 | Pulley-Half | | | | |
| 25 | 95-5550 | 1 | Spacer-Pulley | | | | |
| 26 | 60-8810 | 1 | Retainer-Shift-Fork | | | | |



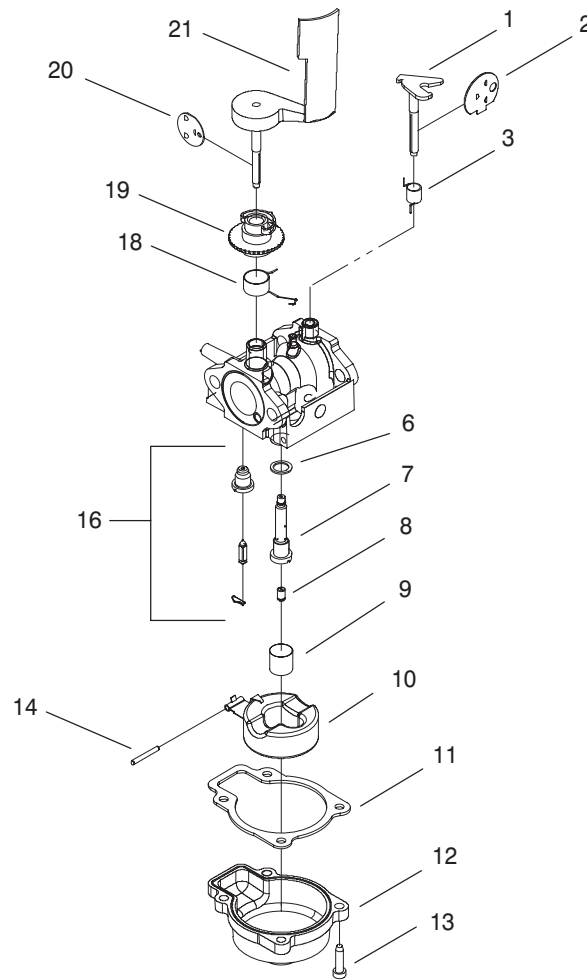
Sheet No.:2

Engine Assembly No. 98-1396

| Ref. No. | Part No. | Qty. | Description |
|----------|----------|------|------------------------|
| 1 | 95-7636 | 1 | Short Block ASM |
| 2 | 94-5776 | 1 | Head-Cylinder |
| 3 | 94-5778 | 1 | Gasket-Head |
| 4 | 94-5779 | 2 | Stud |
| 5 | 94-5780 | 2 | Bolt - Head |
| 6 | 50-1170 | 1 | Plug-Spark |
| 7 | 94-5795 | 2 | Gasket-Intake |
| 8 | 612507 | 2 | Screw |
| 9 | 95-1861 | 1 | Hose-Primer |
| 11 | 95-5574 | 1 | Filter-Air |
| 12 | 95-5577 | 1 | Cover-Air Filter |
| 13 | 610383 | 1 | Retainer-Filter Cover |
| 14 | 130743 | 1 | Nut |
| 15 | 316959 | 1 | Washer-Lock |
| 16 | 95-1786 | 1 | Cup-Starter |
| 17 | 95-1866 | 1 | Flywheel |
| 18 | 92-1152 | 1 | Module-Ignition |
| 18:1 | 681678 | 1 | Clip-High Tension Lead |
| *18:2 | 684698 | 1 | Lead-High Tension |
| 19 | 613208 | 4 | Screw |
| 20 | 95-1868 | 1 | Shroud-Recoil |
| 20:2 | 99-6713 | 1 | Recoil And Decal ASM |
| 20:3 | 613773 | 1 | Rope |
| 20:4 | 3290-321 | 4 | Screw-HWH |
| 20:5 | 3296-2 | 4 | Nut-Lock |

| Ref. No. | Part No. | Qty. | Description |
|----------|----------|------|------------------------|
| 21 | 700094 | 2 | Screw-HH |
| 22 | 146501 | 2 | Nut |
| 23 | 95-1870 | 1 | Screw-Shoulder |
| 24 | 95-1871 | 1 | Screw-HWH |
| 25 | 93-4312 | 1 | Brake Plate ASM |
| 26 | 84-7820 | 1 | Plate-Brake |
| 27 | 3290-459 | 2 | Rivet-Plastic |
| 28 | 92-2925 | 1 | Strap-Insulation |
| 29 | 60-9010 | 1 | Strap-Ground |
| 30 | 100-2929 | 1 | Stop-Ground Strap |
| 31 | 12-5450 | 1 | Screw |
| 32 | 98-7037 | 1 | Lead Wire-Brake Switch |
| 33 | 607199 | 1 | Key |
| 35 | 95-1778 | 1 | Gasket-Exhaust |
| 36 | 95-1878 | 1 | Pulley |
| 37 | 104-0214 | 1 | Screw-Set,Cone Point |
| 38 | 92-1043 | 1 | V Belt |
| 39 | 95-5588 | 1 | Air Base ASM |
| 40 | 95-5578 | 1 | Tunnel-Inlet |
| 41 | 95-7613 | 1 | Gasket-Filter |
| 42 | 3290-456 | 4 | Washer-Belleville |
| *51 | 609790 | 1 | Sealer-Loctite 50cc |
| 53 | 98-1388 | 1 | Shield-Carburetor |

* Not illustrated



Sheet No.:A2

Carburetor Assembly No. 98-7042

| Ref. No. | Part No. | Qty. | Description | Ref. No. | Part No. | Qty. | Description |
|----------|----------|------|------------------------|----------|----------|------|-------------|
| 1 | 95-5581 | 1 | Shaft-Choke | | | | |
| 2 | 94-5788 | 1 | Disc-Choke | | | | |
| 3 | 95-5583 | 1 | Spring-Choke | | | | |
| 6 | 612383 | 1 | Washer | | | | |
| 7 | 98-7001 | 1 | Nozzle | | | | |
| 8 | 98-1357 | 1 | Jet-Main | | | | |
| 9 | 94-5787 | 1 | Filter-Fuel | | | | |
| 10 | 95-1899 | 1 | Float & Arm ASM | | | | |
| 11 | 98-1362 | 1 | Gasket | | | | |
| 12 | 92-9691 | 1 | Chamber-Float | | | | |
| 13 | 608850 | 4 | Screw-HH | | | | |
| 14 | 92-6389 | 1 | Pin-Straight | | | | |
| 16 | 92-9697 | 1 | Val/Seat-Float | | | | |
| 18 | 98-7011 | 1 | Spring-Throttle | | | | |
| 19 | 610834 | 1 | Collar-Adjust, Airvane | | | | |
| 20 | 98-7047 | 1 | Disc-Throttle | | | | |
| 21 | 92-6376 | 1 | Air Vane & Shaft | | | | |

LAWN-BOY®