

# LAWN-BOY®

## GoldPro Series™ Walk-Behind Mower Model No. 10525-20000001 and Up

### Parts Catalog

---

#### Ordering Replacement Parts

To order replacement parts, please supply: the part number, the quantity, and the description of each part desired.

#### Understanding Reference Numbers

Each identified part in an illustration has a reference number. The reference number for a part also appears in the parts list, along with other information about the part.

This catalog uses two special reference number formats, one to indicate parts in a service assembly and another to indicate the quantity of a given part in an illustration.

#### Service Assembly Reference Numbers

Parts in service assemblies have reference numbers in the form **a:b**. The **a** represents the reference number of the entire service assembly and the **b** represents a sequential number unique to each part within the service assembly.

For example, a wheel assembly might be identified by reference number **6**, the tire by **6:1**, the valve by **6:2**, and the wheel by **6:3**. When you order the assembly identified by reference number **6**, you receive all parts identified by reference numbers **6:1**, **6:2**, and **6:3**. However, you may also order any part individually.

Reference numbers of this type appear in illustrations and in part lists.

#### Reference Numbers Indicating Quantity

In an illustration, if a reference number indicates more than one part, the reference number has the form **nX y**. The **n** represents the quantity of the part, the **X** is the multiplication symbol, and the **y** represents the reference number.

For example, in an illustration, the reference number **2X 37** means that two of the parts identified by reference number **37** are indicated.

## Contents

| Description                          | Page | Description                            | Page |
|--------------------------------------|------|--|------|
| Housing Assembly .....               | 3    | Handle And Controls Assembly .....     | 7    |
| Gear Case Assembly No. 92-7869 ..... | 4    | Engine Assembly No. 98-1396 .....      | 8    |
| Engine And Blade Assembly .....      | 5    | Short Block Assembly No. 95-7636 ..... | 10   |
| Rear Axle Assembly .....             | 6    | Carburetor Assembly No. 98-7042 .....  | 11   |

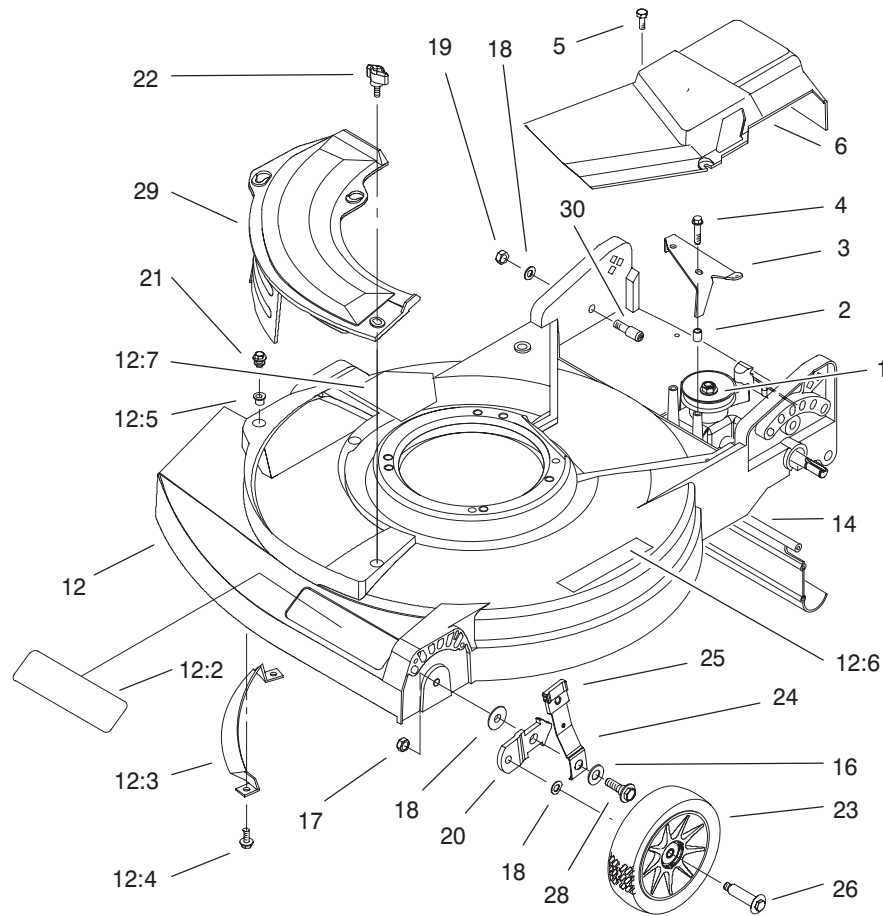
## Accessories

| Description            | Model / Part No. | Description             | Model / Part No. |
|------------------------|------------------|-------------------------|------------------|
| Side Bagging Kit ..... | Model No. 89817  | Leaf Bag .....          | Model No. 89804  |
| Rear Bagging Kit ..... | Model No. 89800  | Leaf Shredder Kit ..... | Model No. 89860  |

## Part Description Abbreviations

Part descriptions in this catalog may include the following abbreviations.

| Abbreviation | Meaning                           | Abbreviation | Meaning                 |
|--------------|-----------------------------------|--------------|-------------------------|
| AR .....     | as required                       | INC .....    | incorporated            |
| ASM .....    | assembly                          | LH .....     | left hand               |
| CARR .....   | carriage                          | NI .....     | nylon insert            |
| DEG .....    | degrees                           | PPH .....    | Phillips pan head       |
| FH .....     | flat head                         | PTH .....    | Phillips truss head     |
| GA .....     | gauge                             | PTO .....    | power take off          |
| HF .....     | hex flange                        | RH .....     | right hand              |
| HH .....     | hex head                          | SFH .....    | slotted fillister head  |
| HHF .....    | hex head flange                   | SHH .....    | slotted hex head        |
| HLH .....    | hex lag head                      | SQH .....    | square head             |
| HJ .....     | hex jam                           | SHWH .....   | slotted hex washer head |
| HOC .....    | height-of-cut                     | SPH .....    | slotted pan head        |
| HS .....     | hex socket                        | SRH .....    | slotted round head      |
| HSBH .....   | hex socket button head            | STD .....    | standard                |
| HSFH .....   | hex socket flat head              | TAP .....    | self tapping            |
| HSH .....    | hex socket head                   | TTH .....    | Torx truss head         |
| HWH .....    | hex washer head                   | WH .....     | wing head               |
| HWHTF .....  | hex washer head<br>thread forming |              |                         |

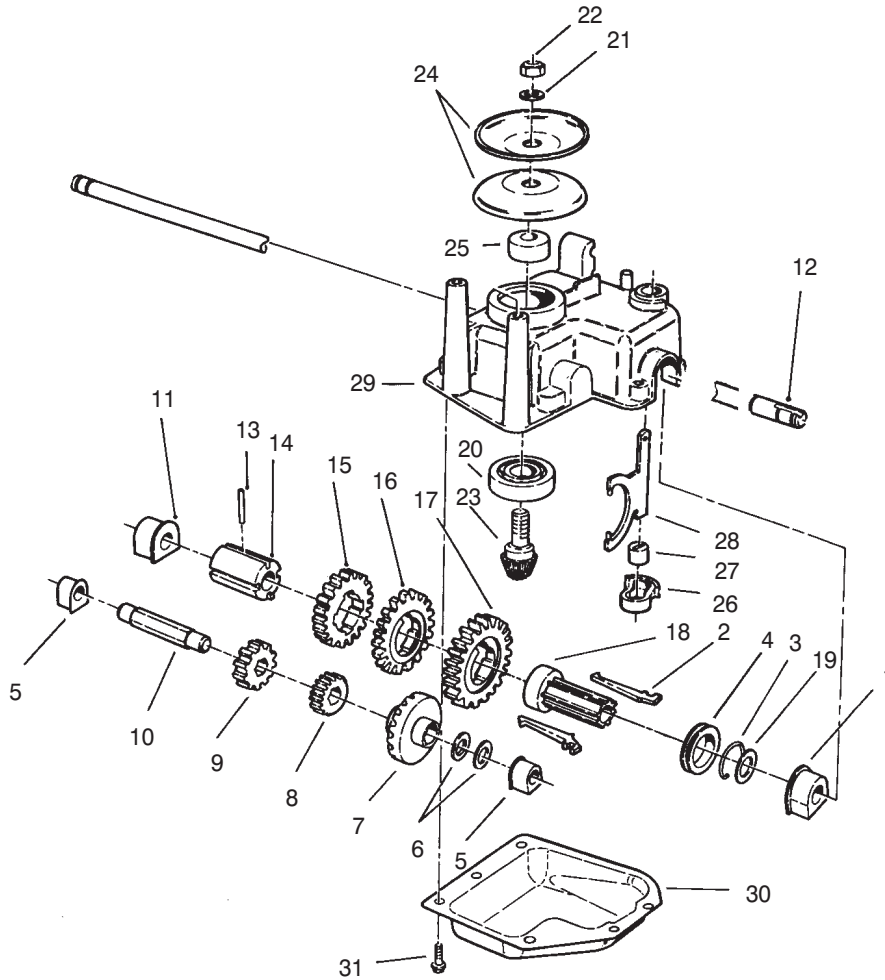


Sheet No.:2

## Housing Assembly

| Ref. No. | Part No.   | Qty. | Description                     | Ref. No. | Part No. | Qty. | Description                   |
|----------|------------|------|---------------------------------|----------|----------|------|-------------------------------|
| 1        | 92-7869    | 1    | Gear Case ASM                   | 25       | 92-1008  | 4    | Knob-Lever, Height Adjustment |
| 2        | 46-5551    | 2    | Spacer                          | 26       | 92-1099  | 2    | Bolt-Shoulder                 |
| 3        | 92-7699-03 | 1    | Bracket-Actuator                | 28       | 92-4856  | 2    | Bolt-Shoulder                 |
| 4        | 32144-110  | 2    | Screw-HWH                       | 29       | 92-8630  | 1    | Plate-Mulch                   |
| 5        | 12-5450    | 2    | Screw                           | 30       | 92-9673  | 2    | Screw-Torx                    |
| 6        | 98-4493    | 1    | Cover - Drive                   | *99      | 614249   | 1    | Tie Strap                     |
| 12       | 99-1566    | 1    | Housing                         | *99      | 95-7052  | 1    | Plate - Chute Opening         |
| 12:2     | 95-7421    | 1    | Decal - Deck                    |          |          |      |                               |
| 12:3     | 608175     | 1    | Toe Bar                         |          |          |      |                               |
| 12:4     | 46-6811    | 2    | Screw-HWH                       |          |          |      |                               |
| 12:5     | 94-1610    | 3    | Grommet - Plastic               |          |          |      |                               |
| 12:6     | 93-7250    | 1    | Decal-Warning                   |          |          |      |                               |
| 12:7     | 43-8480    | 1    | Decal-Danger                    |          |          |      |                               |
| 14       | 92-7736    | 1    | Shield - Trailing               |          |          |      |                               |
| 16       | 3290-413   | 2    | Washer-Belleville               |          |          |      |                               |
| 17       | 3296-39    | 2    | Nut-Lock, NI                    |          |          |      |                               |
| 18       | 40-1940    | 6    | Washer                          |          |          |      |                               |
| 19       | 603773     | 2    | Nut                             |          |          |      |                               |
| 20       | 95-7403-03 | 2    | Bracket-Wheel Height Adjustment |          |          |      |                               |
| 21       | 614677     | 2    | Screw- Sems                     |          |          |      |                               |
| 22       | 98-8332    | 1    | Knob                            |          |          |      |                               |
| 23       | 684776     | 2    | Wheel & Tire ASM                |          |          |      |                               |
| 24       | 92-1006    | 2    | Spring Arm ASM - Front          |          |          |      |                               |

\* Not illustrated



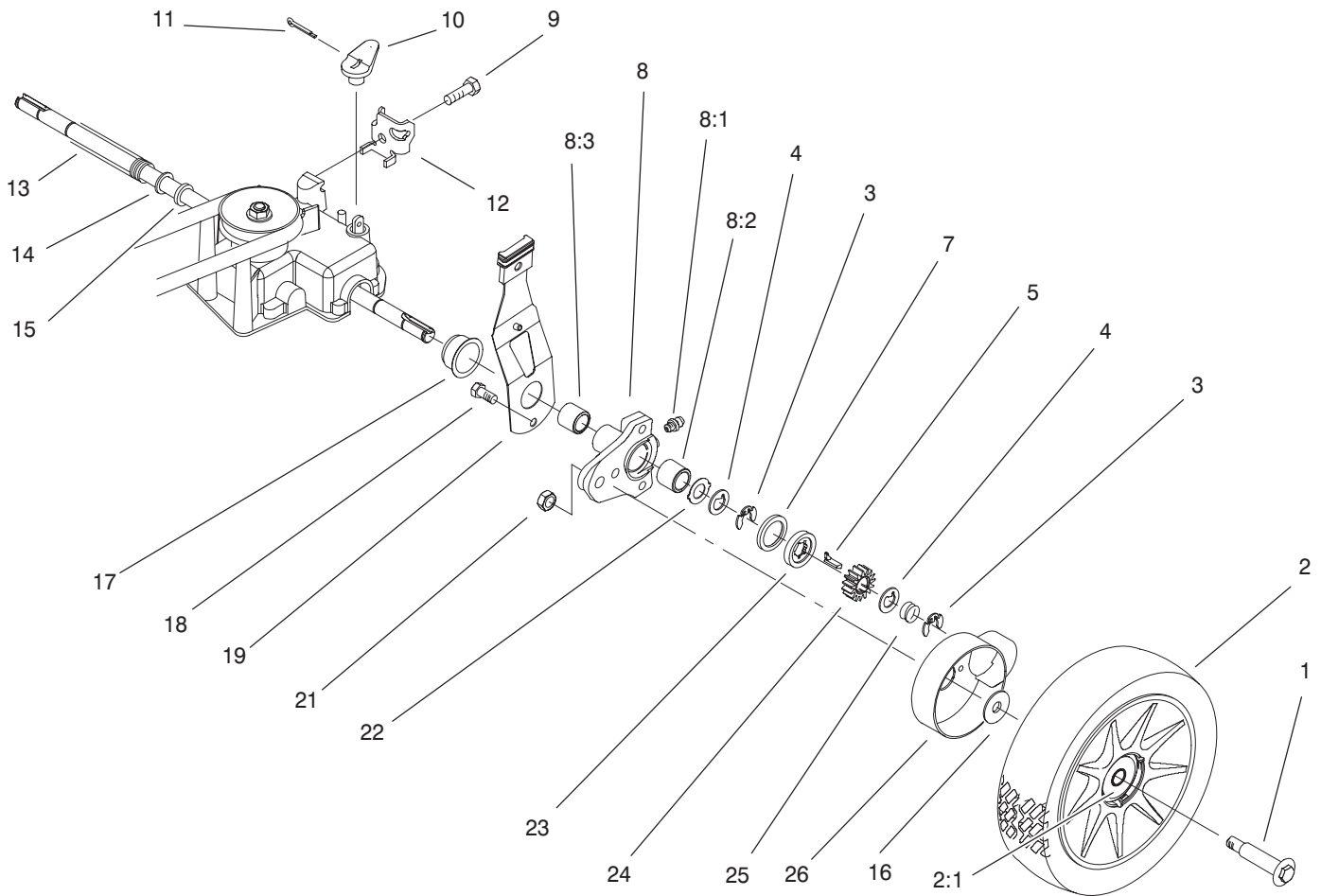
Sheet No.:A1

## Gear Case Assembly No. 92-7869

| Ref. No. | Part No. | Qty. | Description              |
|----------|----------|------|--------------------------|
| 1        | 60-8770  | 1    | Bushing- Output          |
| 2        | 76-0760  | 2    | Key-Shift                |
| 3        | 65-5250  | 1    | Clip-Spring              |
| 4        | 76-0770  | 1    | Collar-Shift             |
| 5        | 60-8750  | 2    | Bushing                  |
| 6        | 36-4791  | 2    | Washer-Thrust            |
| 7        | 55-3760  | 1    | Gear-15t Spur, 37t Bevel |
| 8        | 55-3780  | 1    | 20 T Pinion              |
| 9        | 55-3800  | 1    | 25 T Pinion              |
| 10       | 60-8800  | 1    | Shaft-Intermediate       |
| 11       | 60-8850  | 1    | Bushing-Output           |
| 12       | 65-4770  | 1    | Shaft-Output             |
| 13       | 3285-19  | 1    | Pin-Groove               |
| 14       | 60-8790  | 1    | Sleeve - Gear            |
| 15       | 55-3810  | 1    | 39 T Gear                |
| 16       | 55-3790  | 1    | 44 T Gear                |
| 17       | 55-3770  | 1    | 49 T Gear                |
| 18       | 76-0780  | 1    | Sleeve-Key, Shift        |
| 19       | 36-4780  | 1    | Washer                   |
| 20       | 38-7820  | 1    | Bearing-Ball             |
| 21       | 3256-24  | 1    | Washer-Flat              |
| 22       | 3296-5   | 1    | Nut-Lock, NI             |
| 23       | 92-5790  | 1    | Pinion                   |
| 24       | 100-1176 | 2    | Half-Pulley              |
| 25       | 92-5791  | 1    | Spacer                   |

| Ref. No. | Part No.   | Qty. | Description          |
|----------|------------|------|----------------------|
| 26       | 60-8810    | 1    | Retainer- Shift Fork |
| 27       | 29-9570    | 1    | Bushing-Yoke         |
| 28       | 60-8870    | 1    | Yoke-Shift           |
| 29       | 60-8710    | 1    | Case-Gear, Upper     |
| 30       | 60-8730-03 | 1    | Cover-Gear Case      |
| 31       | 49-2040    | 6    | Screw-Taptite        |





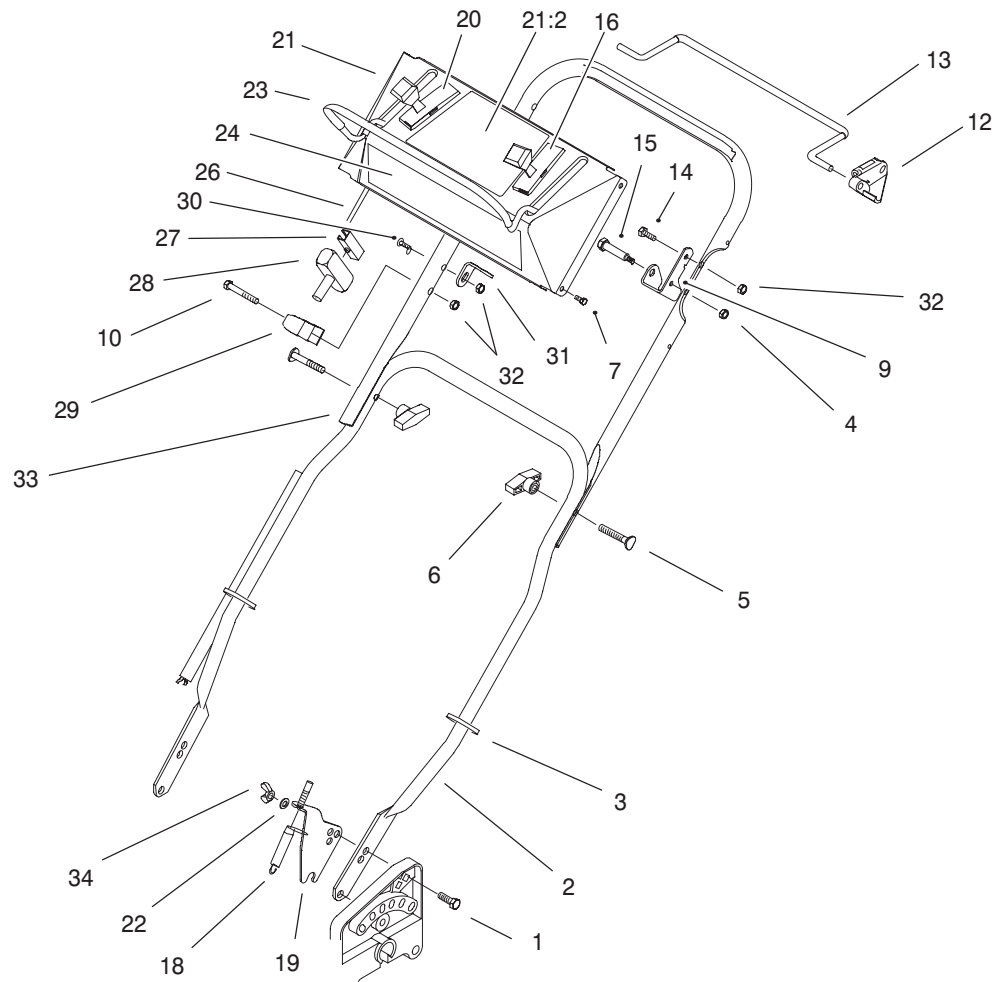
Sheet No.:4

## Rear Axle Assembly

| Ref. No. | Part No. | Qty. | Description                    |
|----------|----------|------|--------------------------------|
| 1        | 92-1057  | 2    | Bolt-Shoulder                  |
| 2        | 92-1042  | 2    | 8" Wheel & Tire ASM            |
| 2:1      | 27-6250  | 2    | Bushing                        |
| 3        | 65-2720  | 4    | Ring-Klip, Sp                  |
| 4        | 65-4740  | 4    | Washer-Thrust, Keyed           |
| 5        | 66-6050  | 1    | Key-Rocking, LH                |
| *6       | 66-6040  | 1    | Key-Rocking, RH                |
| 7        | 65-4710  | 2    | Ring-Friction                  |
| 8        | 92-7746  | 2    | Arm ASM-Rear Height Adjustment |
| 8:1      | 302-56   | 1    | Fitting-Zerk                   |
| 8:2      | 47-2900  | 1    | Bushing                        |
| 8:3      | 70-9760  | 1    | Bushing                        |
| 9        | 32144-70 | 1    | Screw-HH                       |
| 10       | 60-8821  | 1    | Lever-Shift                    |
| 11       | 3272-10  | 1    | Pin-Cotter                     |
| 12       | 82-8780  | 1    | Clamp-Cable                    |
| 13       | 24-7920  | 1    | Cover-Shaft, Drive             |
| 14       | 303259   | 1    | Washer                         |
| 15       | 605255   | 1    | Washer                         |
| 16       | 614426   | 2    | Washer-Stepped                 |
| 17       | 92-6535  | 2    | Ring - Isolator                |
| 18       | 32144-85 | 2    | Screw-HH                       |
| 19       | 92-6540  | 1    | Rear Spring Arm                |

| Ref. No. | Part No. | Qty. | Description                         |
|----------|----------|------|-------------------------------------|
| *20      | 92-6539  | 1    | ASM-LH<br>Rear Spring Arm<br>ASM-RH |
| 21       | 603773   | 2    | Nut                                 |
| 22       | 65-4730  | 2    | Washer-Arm, Pivot                   |
| 23       | 65-4760  | 2    | Washer                              |
| 24       | 65-4750  | 2    | Gear-Pinion                         |
| 25       | 65-4720  | 2    | Spring-Compression                  |
| 26       | 94-1609  | 2    | Cover-Wheel                         |

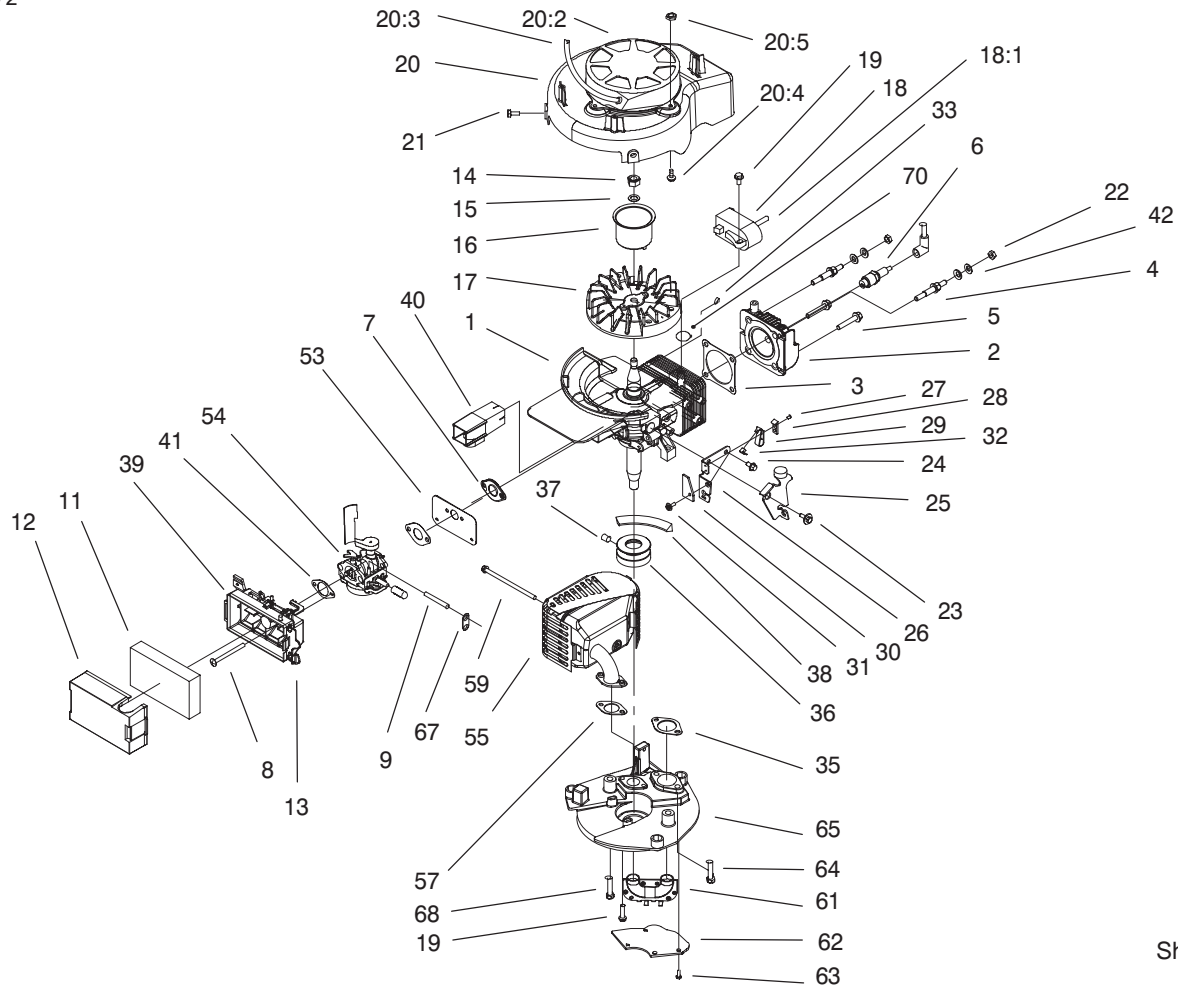
\* Not illustrated



Sheet No.:5

## Handle And Controls Assembly

| Ref. No. | Part No.    | Qty. | Description               | Ref. No. | Part No.    | Qty. | Description              |
|----------|-------------|------|---------------------------|----------|-------------|------|--------------------------|
| 1        | 3230-29     | 2    | Screw-CARR                | 29       | 93-7383     | 1    | Rope - Guide             |
| 2        | 100-2890-05 | 1    | Handle-Lower              | 30       | 92-2268     | 1    | Screw-Handle             |
| 3        | 614249      | 2    | Tie Strap                 | 31       | 92-2928     | 1    | Bracket-Anchor,<br>Cable |
| 4        | 3296-56     | 1    | Nut-Lock, NI              | 32       | 3296-73     | 3    | Nut-Lock, NI             |
| 5        | 614697      | 2    | Screw                     | 33       | 100-2892-05 | 1    | Handle-Upper             |
| 6        | 98-7134     | 2    | Knob-Handle               | 34       | 32103-29    | 2    | Nut-wing                 |
| 7        | 92-9665     | 4    | Screw                     |          |             |      |                          |
| 9        | 92-1094     | 1    | Bracket-Stop, Bail        |          |             |      |                          |
| 10       | 321-51      | 1    | Screw-HH                  |          |             |      |                          |
| 12       | 92-5412     | 1    | Stop-Pivot                |          |             |      |                          |
| 13       | 92-1001-03  | 1    | Bail-Control              |          |             |      |                          |
| 14       | 321-4       | 1    | Screw-HH                  |          |             |      |                          |
| 15       | 613050      | 1    | Bolt                      |          |             |      |                          |
| 16       | 100-5985    | 1    | Control ASM-Throttle      |          |             |      |                          |
| 18       | 100-5981    | 1    | Cable-Traction            |          |             |      |                          |
| 19       | 92-7899-03  | 1    | Bracket-Traction<br>Cable |          |             |      |                          |
| 20       | 100-5984    | 1    | Cable-Ground Speed        |          |             |      |                          |
| 21       | 100-8799    | 1    | Control Panel ASM         |          |             |      |                          |
| 21:2     | 98-4469     | 1    | Decal - Control Panel     |          |             |      |                          |
| 22       | 3253-33     | 2    | Washer-Lock/Sp            |          |             |      |                          |
| 23       | 92-1093     | 1    | Bail-Engine Control       |          |             |      |                          |
| 24       | 100-6391    | 1    | Decal-Panel Sp            |          |             |      |                          |
| 26       | 100-5986    | 1    | Brake Cable ASM           |          |             |      |                          |
| 27       | 612824      | 1    | Starter-Clip              |          |             |      |                          |
| 28       | 612825      | 1    | Handle-Start              |          |             |      |                          |



Sheet No.:2

## Engine Assembly No. 98-1396

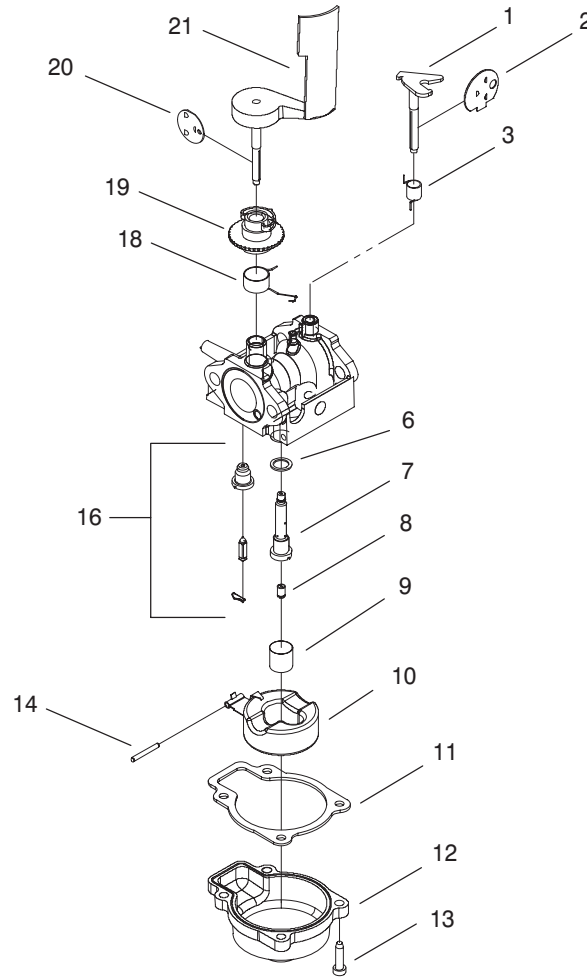
| Ref. No. | Part No. | Qty. | Description            |
|----------|----------|------|------------------------|
| 1        | 95-7636  | 1    | Short Block ASM        |
| 2        | 94-5776  | 1    | Head-Cylinder          |
| 3        | 94-5778  | 1    | Gasket-Head            |
| 4        | 94-5779  | 2    | Stud                   |
| 5        | 94-5780  | 2    | Bolt - Head            |
| 6        | 50-1170  | 1    | Plug-Spark             |
| 7        | 94-5795  | 2    | Gasket-Intake          |
| 8        | 612507   | 2    | Screw                  |
| 9        | 95-1861  | 1    | Hose-Primer            |
| 11       | 95-5574  | 1    | Filter-Air             |
| 12       | 95-5577  | 1    | Cover-Air Filter       |
| 13       | 610383   | 1    | Retainer-Filter Cover  |
| 14       | 130743   | 1    | Nut                    |
| 15       | 316959   | 1    | Washer-Lock            |
| 16       | 95-1786  | 1    | Cup-Starter            |
| 17       | 95-1866  | 1    | Flywheel               |
| 18       | 99-2911  | 1    | Module-Ignition        |
| 18:1     | 99-6721  | 1    | Clip-High Tension Lead |
| *18:2    | 99-6719  | 1    | Lead-High Tension      |
| 19       | 613208   | 4    | Screw                  |
| 20       | 95-1868  | 1    | Shroud-Recoil          |
| 20:2     | 99-6713  | 1    | Recoil And Decal ASM   |
| 20:3     | 613773   | 1    | Rope                   |
| 20:4     | 3290-321 | 4    | Screw-HWH              |
| 20:5     | 3296-2   | 4    | Nut-Lock               |

| Ref. No. | Part No. | Qty. | Description            |
|----------|----------|------|------------------------|
| 21       | 700094   | 2    | Screw-HH               |
| 22       | 146501   | 2    | Nut                    |
| 23       | 95-1870  | 1    | Screw-Shoulder         |
| 24       | 95-1871  | 1    | Screw-HWH              |
| 25       | 93-4312  | 1    | Brake Plate ASM        |
| 26       | 84-7820  | 1    | Plate-Brake            |
| 27       | 3290-459 | 2    | Rivet-Plastic          |
| 28       | 92-2925  | 1    | Strap-Insulation       |
| 29       | 60-9010  | 1    | Strap-Ground           |
| 30       | 100-2929 | 1    | Stop-Ground Strap      |
| 31       | 12-5450  | 1    | Screw                  |
| 32       | 98-7037  | 1    | Lead Wire-Brake Switch |
| 33       | 607199   | 1    | Key                    |
| 35       | 95-1778  | 1    | Gasket-Exhaust         |
| 36       | 95-1878  | 1    | Pulley                 |
| 37       | 104-0214 | 1    | Screw-Set,Cone Point   |
| 38       | 92-1043  | 1    | V Belt                 |
| 39       | 95-5588  | 1    | Air Base ASM           |
| 40       | 95-5578  | 1    | Tunnel-Inlet           |
| 41       | 95-7613  | 1    | Gasket-Filter          |
| 42       | 3290-456 | 4    | Washer-Belleville      |
| *51      | 609790   | 1    | Sealer-Loctite 50cc    |
| 53       | 98-1388  | 1    | Shield-Carburetor      |

\* Not illustrated







Sheet No.:A2

## Carburetor Assembly No. 98-7042

| Ref. No. | Part No. | Qty. | Description            | Ref. No. | Part No. | Qty. | Description |
|----------|----------|------|------------------------|----------|----------|------|-------------|
| 1        | 95-5581  | 1    | Shaft-Choke            |          |          |      |             |
| 2        | 94-5788  | 1    | Disc-Choke             |          |          |      |             |
| 3        | 95-5583  | 1    | Spring-Choke           |          |          |      |             |
| 6        | 612383   | 1    | Washer                 |          |          |      |             |
| 7        | 98-7001  | 1    | Nozzle                 |          |          |      |             |
| 8        | 98-1357  | 1    | Jet-Main               |          |          |      |             |
| 9        | 94-5787  | 1    | Filter-Fuel            |          |          |      |             |
| 10       | 95-1899  | 1    | Float & Arm ASM        |          |          |      |             |
| 11       | 98-1362  | 1    | Gasket                 |          |          |      |             |
| 12       | 92-9691  | 1    | Chamber-Float          |          |          |      |             |
| 13       | 608850   | 4    | Screw-HH               |          |          |      |             |
| 14       | 92-6389  | 1    | Pin-Straight           |          |          |      |             |
| 16       | 92-9697  | 1    | Val/Seat-Float         |          |          |      |             |
| 18       | 98-7011  | 1    | Spring-Throttle        |          |          |      |             |
| 19       | 610834   | 1    | Collar-Adjust, Airvane |          |          |      |             |
| 20       | 98-7047  | 1    | Disc-Throttle          |          |          |      |             |
| 21       | 92-6376  | 1    | Air Vane & Shaft       |          |          |      |             |

**LAWN-BOY®**